

The **SimmScope SSXY** is a semi-automatic optical inspection and photo-documentation system for printed circuit board assemblies. The machine automatically moves the circuit board to visual inspection locations or image capture locations to be viewed under the microscope. The circuit board can be left in place while performing certain rework operations.

The **SimmScope** significantly increases the speed and accuracy of manual visual inspections. Programming can be done in a matter of minutes using the Gerber, XY Placement List, and Bill of Material import features. There is also a utility for simple matrix type inspection or photo-documentation of the board.

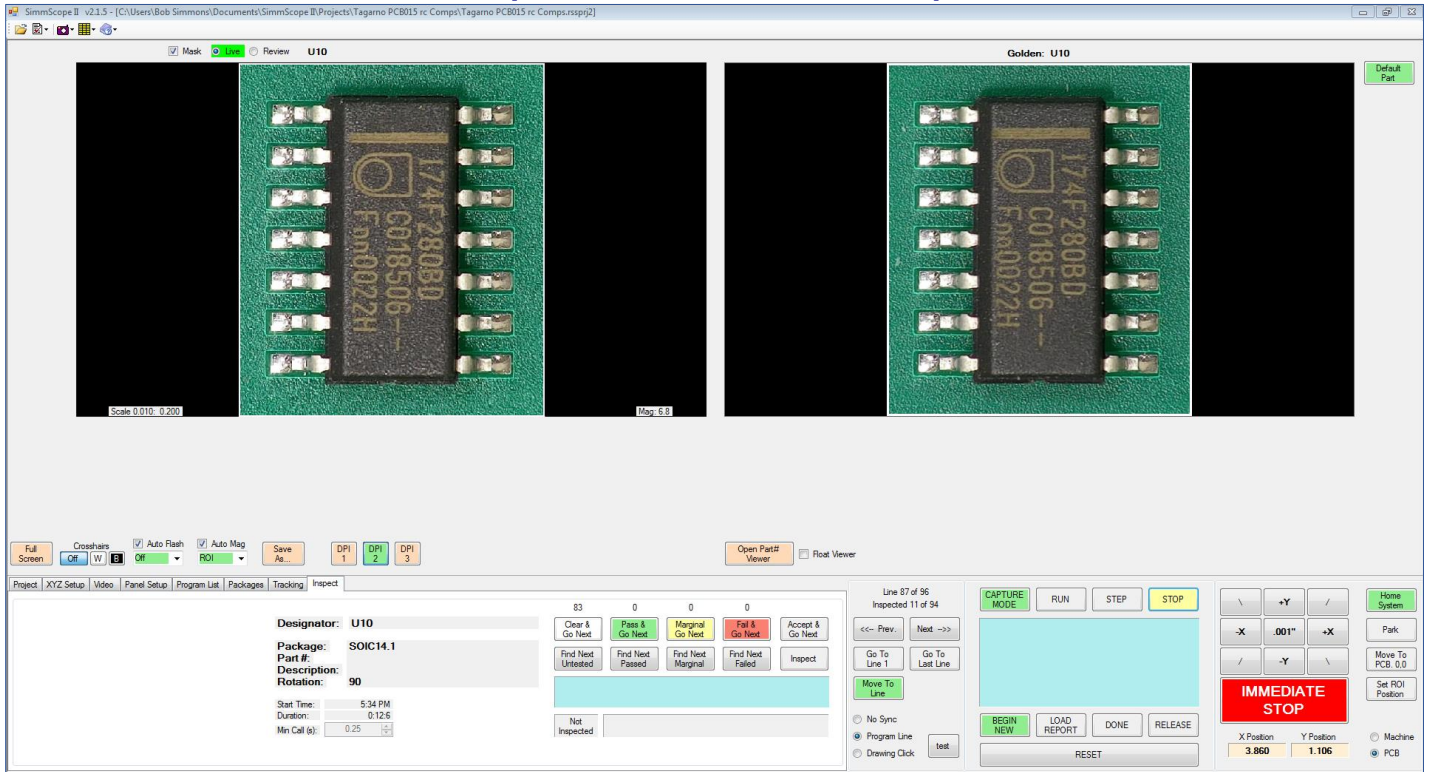
The **SimmScope** shows a live image from the microscope next to a reference image for visual comparison by the operator. Images can be captured and saved as part of a post inspection report.

The **SimmScope** is a powerful inspection tool for:

- High Reliability applications (MIL-Spec, Medical, Automotive)
- Hi-Mix Low-Volume operations
- First Article Inspection
- Solder Joints and Tall Thru-hole Parts
- Conformal Coating
- Assembly Line Auditing
- Cleanliness/FOD/Tin Whisker detection

**Inspect for:** part presence, rotation, polarity, registration, text, solder, solder paste, bent leads, bent pins, jumpers, cut traces, or any other top down or side visual feature on the PCB

## The Graphical User Interface – Comparator Mode



### System Specifications (subject to change)

|                              |   |
|------------------------------|---|
| Base Model                   | SimmScope SSXY  |
| Standard Digital Microscope  | Tagarno FHD ZAP w/ +4 lens ( <a href="#">web link</a> )<br>Full HD Image (1920x1080)<br>30x Optical Zoom<br>Mag. 1.7x - 52.7x, FOV 11.42" - 0.43", WD 9.84" |
| Optional Digital Microscopes | Tagarno microscopes and lenses ( <a href="#">web link</a> )   |
| Optional Lighting            | Tagarno ring lamps (white, UV, or IR), coaxial light, or back light ( <a href="#">web link</a> )  |
| Optional Remote Control      | Tagarno XKEY Control Box for remote control of microscope. Standard zoom controls are on the microscope head. ( <a href="#">web link</a> )                  |
| Top Clearance                | 9.84" top clearance without lighting  |
| Bottom Clearance             | 1.9" bottom clearance or more if specified at time of order   |
| Inspection Area              | 12" x 9" largest circuit board size   |
| Dimensions                   | 34" Wide x 24.5" Deep x 3.3" H  |

**SimmScope is built in the USA.**