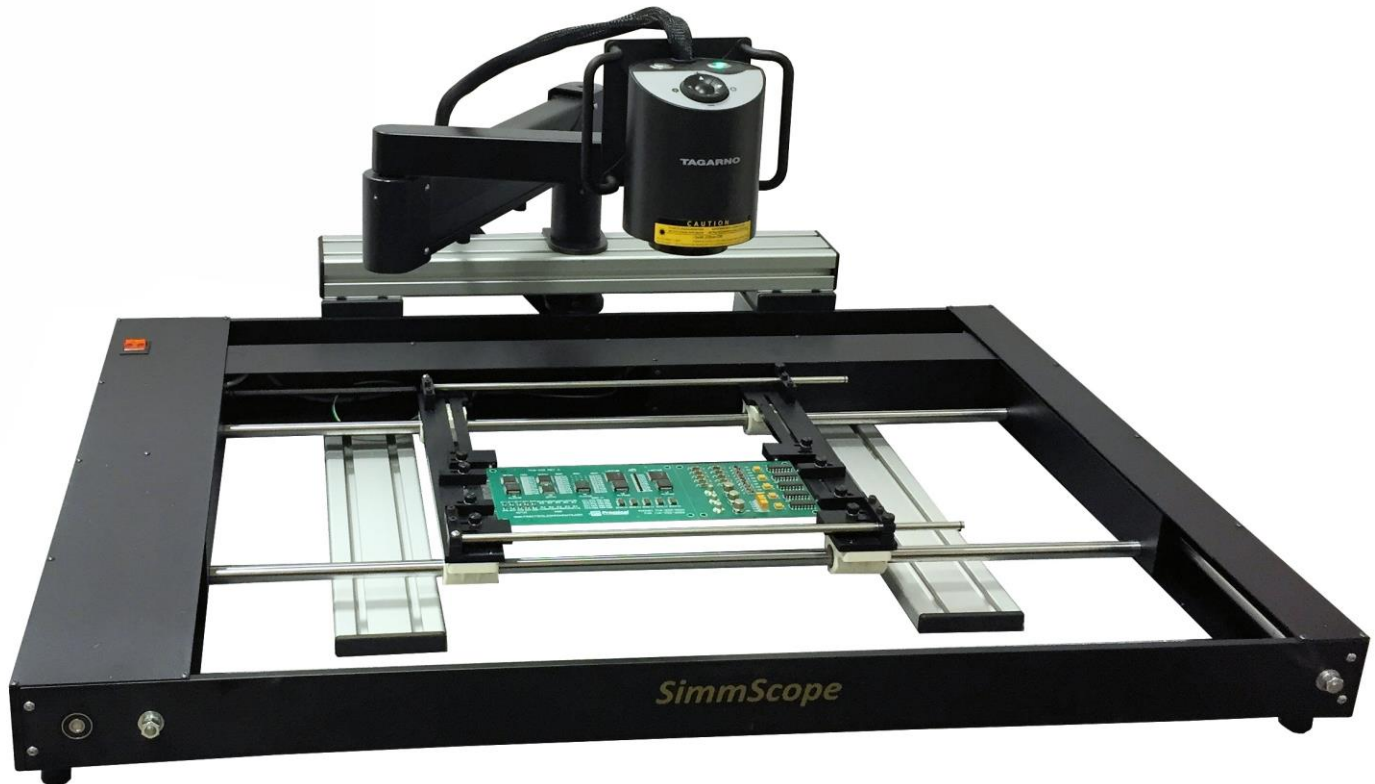




Use With Most USB MicroScopes, Cameras, or Imagers



The **SimmScope SSXY** is an optical inspection and photo-documentation system for printed circuit board assemblies. It combines almost **any USB digital microscope or camera** with a computer controlled XY table to automatically move a circuit board to visual inspection locations or image capture locations to be viewed under the microscope. The circuit board can also be left in place while performing certain rework operations.

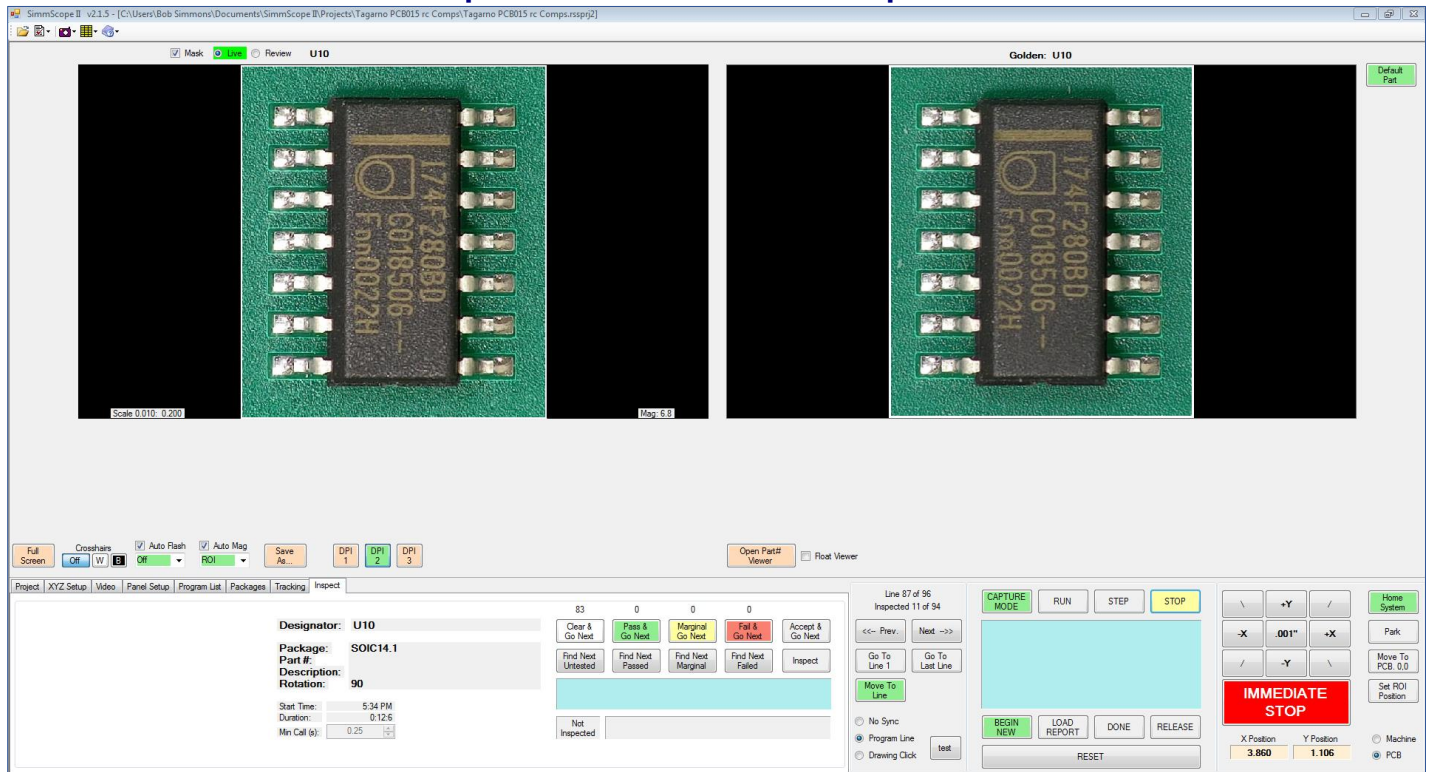
The **SimmScope** significantly increases the speed and accuracy of manual visual inspections. Programming can be done quickly using the XY Placement List and Bill of Material import features. There is also a utility for simple matrix type inspection or photo-documentation and image stitching of the board.

In comparator mode the **SimmScope** shows a live image from the microscope next to a reference image for visual comparison by the operator. Images are automatically captured and saved as part of a post-inspection report.

The **SimmScope** is a powerful inspection and documentation tool for:

- High Reliability applications (MIL-Spec, Medical, Automotive)
- Hi-Mix Low-Volume operations
- First Article Inspection
- Solder Joints and Tall Thru-hole Parts
- Conformal Coating
- Assembly Line Auditing
- Cleanliness/FOD/Tin Whisker detection

The Graphical User Interface – Comparator Mode



Ideal for Inspecting: Part Presence, Rotation, Polarity, Registration, Text, Solder, Solder Paste, Bent Leads, Bent Pins, Jumpers, Cut Traces, or any other top-down visual feature on the PCBA.

System Specifications (subject to change)

Base Model	SimmScope SSXY
Standard Digital Microscope	TAGARNO FHD ZAP w/ +4 lens (web link) Full HD Image (1920x1080) 30x Optical Zoom Mag. 1.7x - 52.7x, FOV 11.42" - 0.43", WD 9.84"
Optional Digital Microscopes	Dino-Lite (web link), or almost any USB digital microscope or camera
Optional Lighting	TAGARNO Ring Lamp (white or UV), coaxial light, back light (web link)
Top Clearance	9.8" for ZAP, or equal to the Focal Distance of the actual Imaging Device
Bottom Clearance	1.9" bottom clearance or more if specified at time of order
Inspection Area	12" x 9" largest circuit board size
Dimensions	34" Wide x 24.5" Deep x 3.3" H

SimmScope is designed and manufactured in the USA.

RS Simmons Co., LLC
Exton, PA USA
www.rssimmons.com

SimmScope SSXY
Machine Assisted Optical Inspection
For SMT & THT Printed Circuit Board Assemblies

Sales: Bob Simmons
bob@rssimmons.com
Cell 610-547-7690